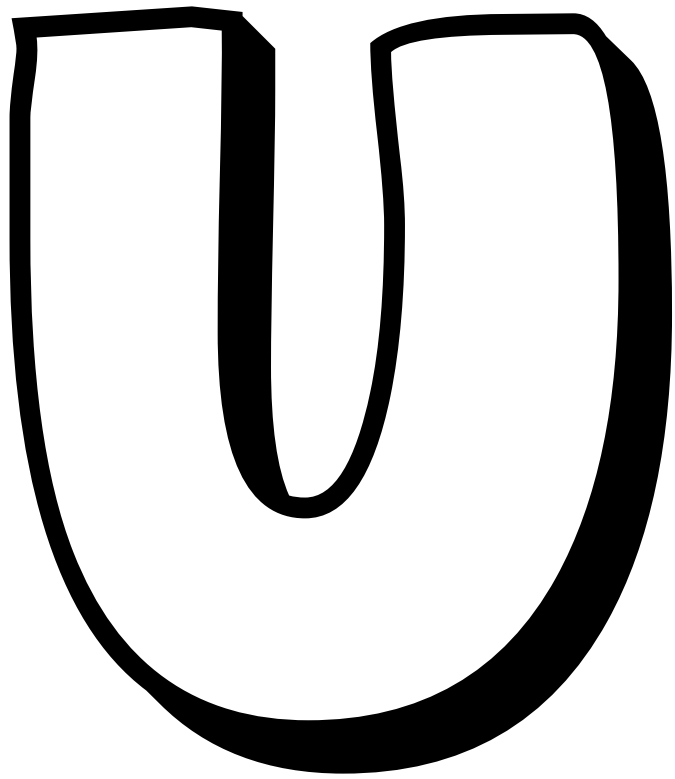
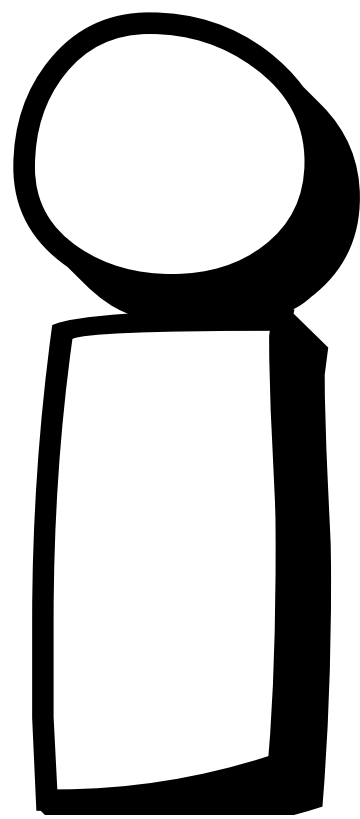


A

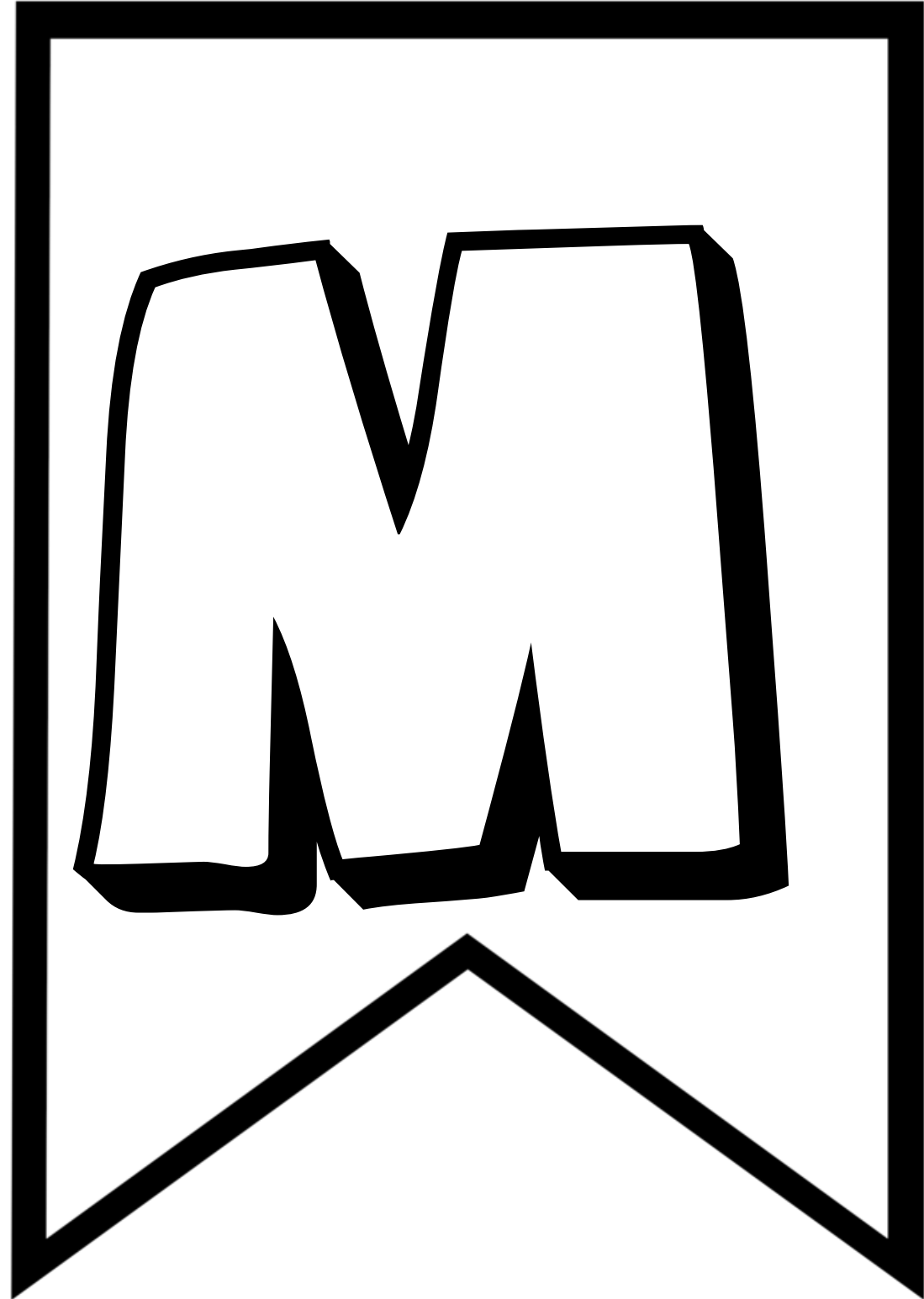
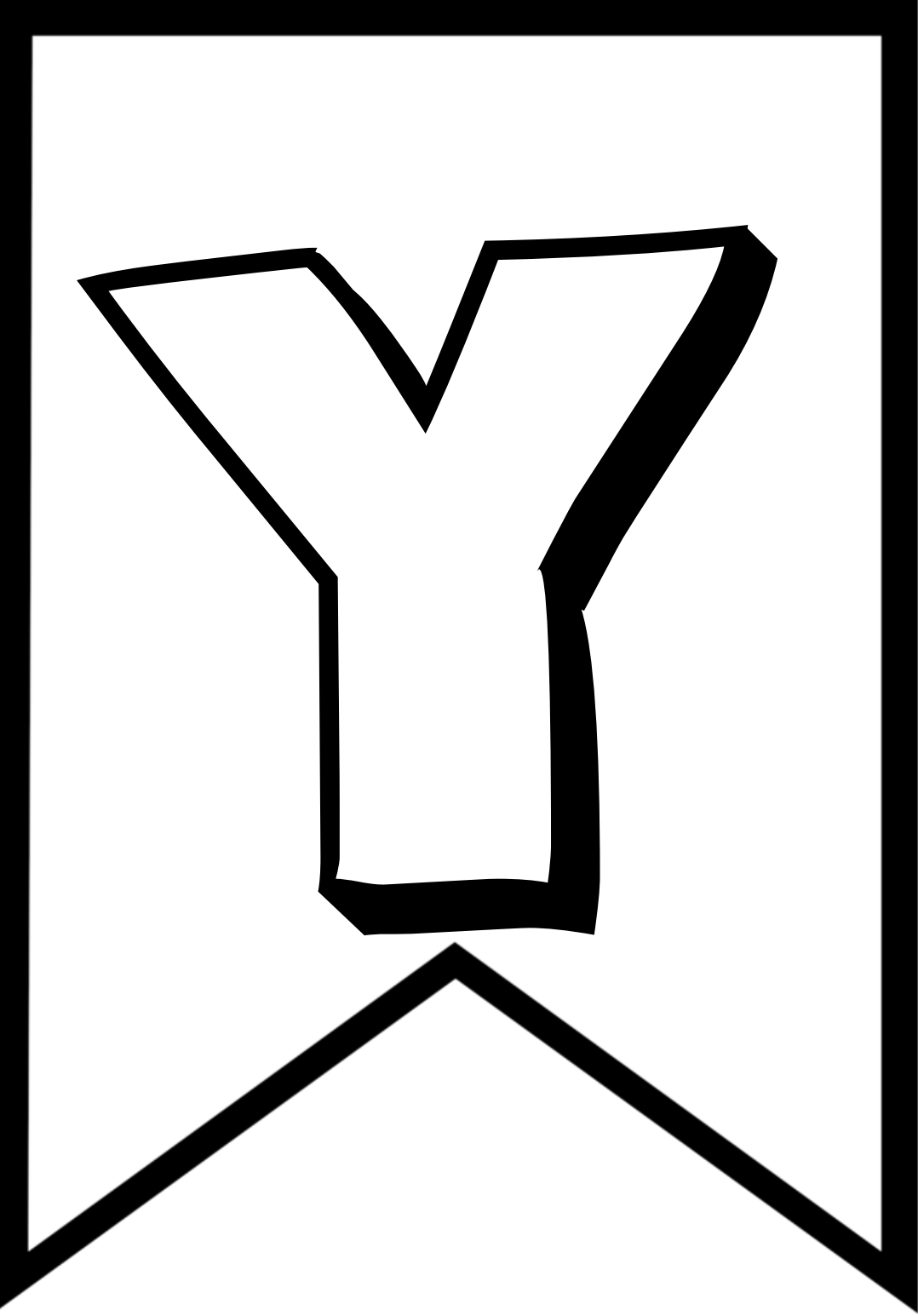
Q

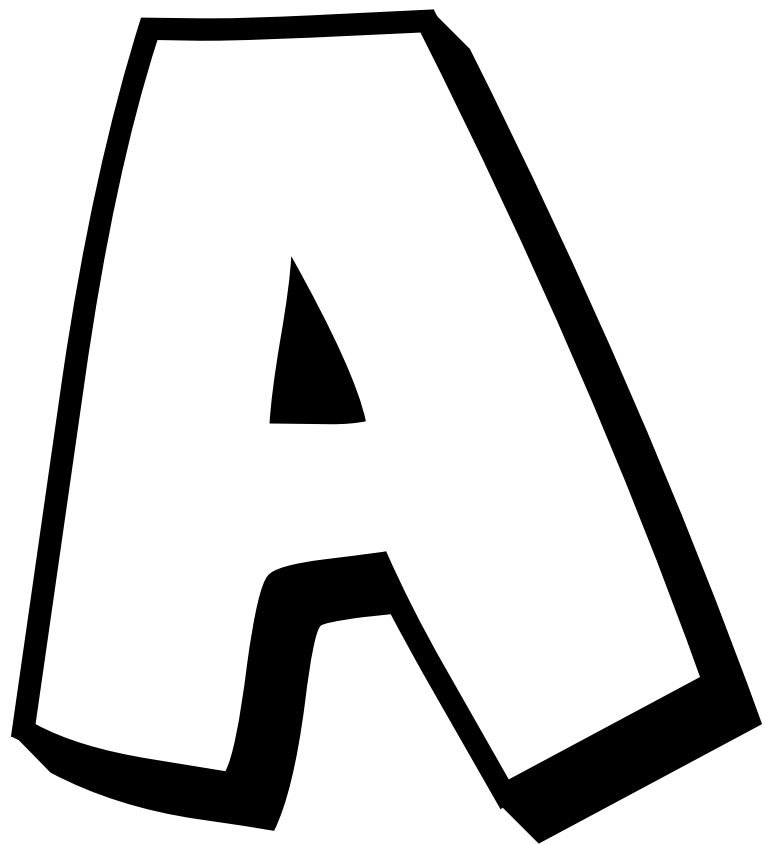


A large, stylized lowercase letter 'u' is centered within a square frame. Below the letter is a thick black banner with a triangular top edge, pointing upwards towards the letter.



A large, stylized lowercase letter 'i' is centered within a square frame. Below the letter is a thick black banner with a triangular top edge, pointing upwards towards the letter.





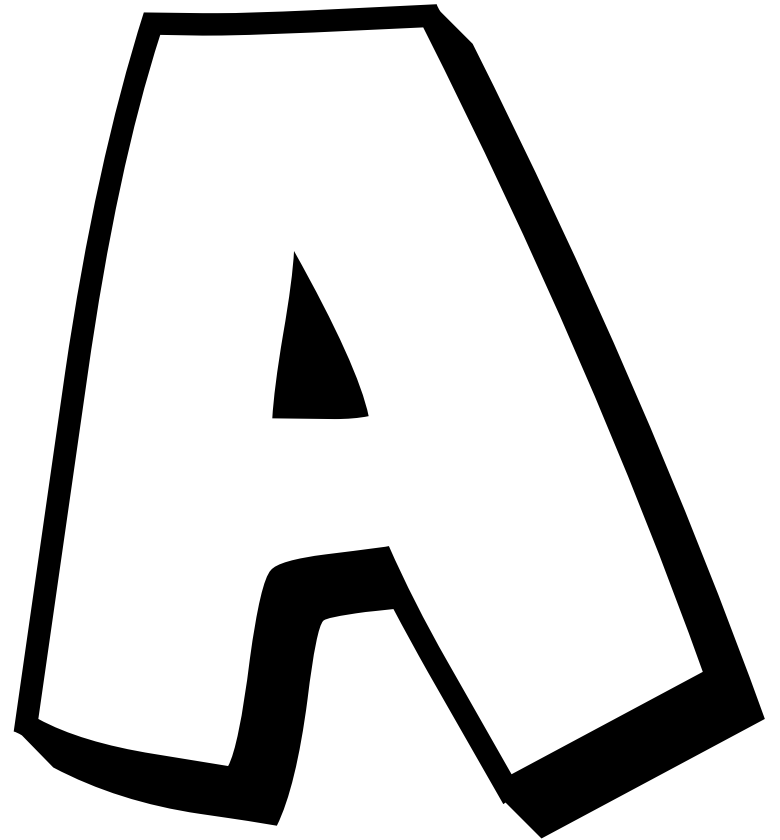
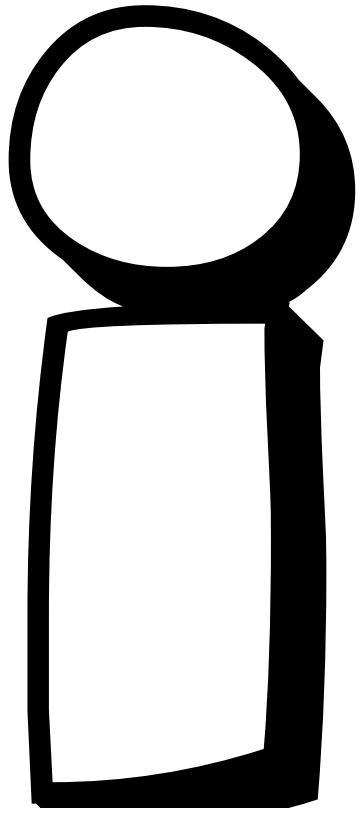
A

A stylized, bold, black outline of the uppercase letter 'A'. The letter has a thick, uniform stroke. The top bar is slightly wider than the bottom bar. The left and right sides are slanted. A small, solid black triangle is positioned in the center of the letter, pointing downwards. The letter is set within a white square frame that has a thick black border.



G

A stylized, bold, black outline of the uppercase letter 'G'. The letter has a thick, uniform stroke. The top curve is rounded and extends to the left. The vertical stem is on the right side. The letter is set within a white square frame that has a thick black border.



BU

BA